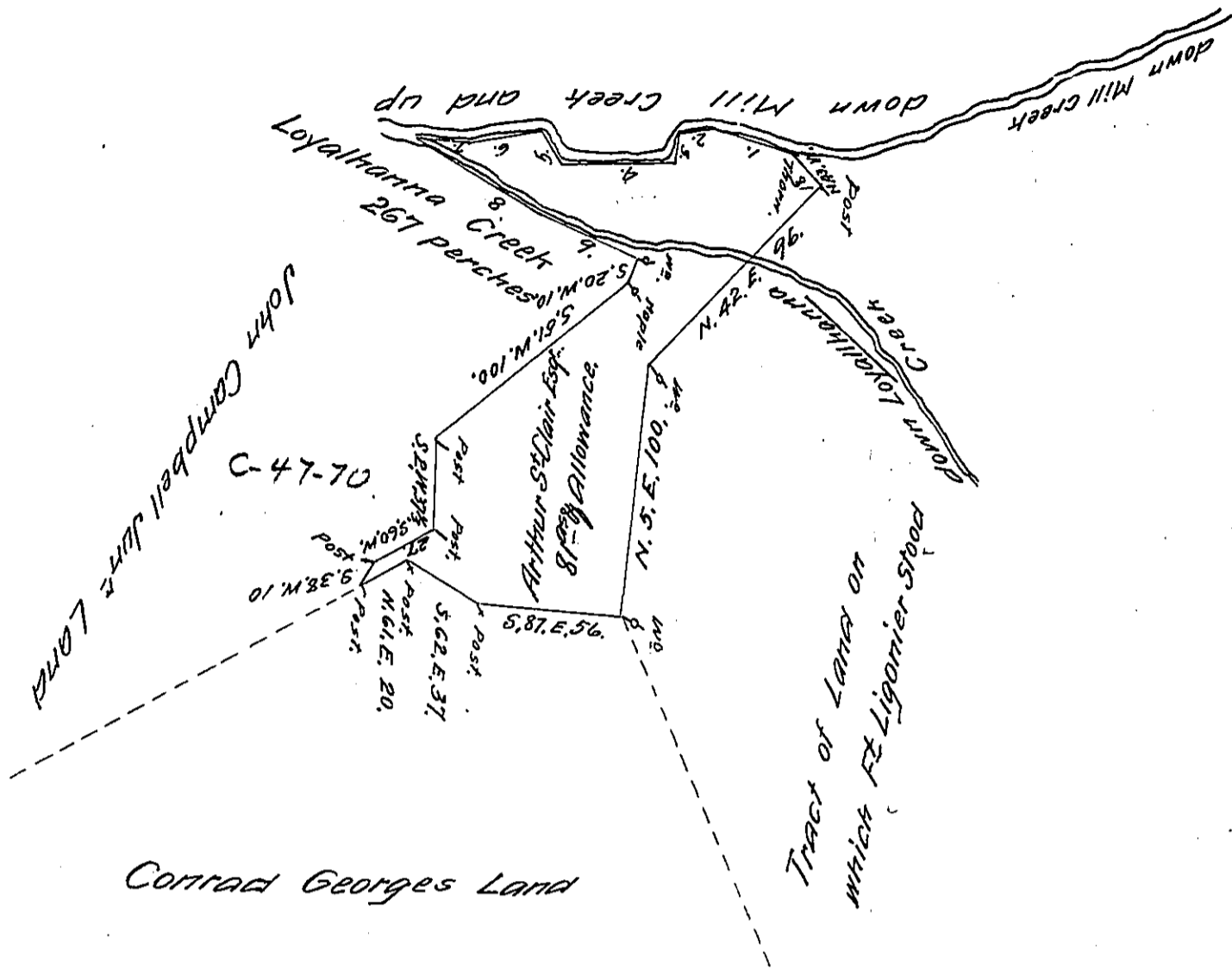


No of COURSES	Courses down Mill Creek & up Loyalhanna Creek.	Distances
1	N. 71. W.	33
2	S. 78. W.	12
3	S. 5. E	10
4	West	44
5	N. 35. W.	16
6	S. 75. W.	30
7	N. 80. W.	20.
8	S. 58. E.	60.
9	S. 65. E	42
Total distance		267



In pursuance of a Warrant dated Nov<sup>r</sup> 16<sup>th</sup> 1787 there was Survey'd for Arthur St. Clair Esquire the above described Tract of Land containing Eighty one Acres with an Allowance proportioned to Six P Cent Situate in Fairfield Township in the County of Westmoreland Surveyd Sept<sup>r</sup> 15<sup>th</sup>. 1796

P John Moore D.S.

To Daniel Brodhead Esq<sup>r</sup> }  
Surveyor Gen<sup>l</sup> of PENN<sup>a</sup> }

IN TESTIMONY that the above is a copy of the original remaining on file in the Department of Internal Affairs of Pennsylvania, made conformably to an Act of Assembly approved the 16th day of February, 1833, I have hereunto set my Hand and caused the Seal of said Department to be affixed at Harrisburg, this twentysecond day of November 1911.

*Henry Horner*  
Secretary of Internal Affairs.